

PEX-A PIPING SOLUTIONS

2023 PRODUCT CATALOG





High-Quality. Durable. Reliable.

Jones Stephens is a leader of rough plumbing products with a strong brand built on providing 30 years of innovation for professional contractors. Known for delivering high-quality, reliable products and world-class service, Jones Stephens provides the broadest selection of plumbing products from repair and installation products, to tools and leading-edge innovations.

Our mission is simple. Provide maximum value and the highest quality products for plumbing and gas applications.

Our associates are the foundation of everything we do and are critical to delivering a world-class experience to our customer partners. We focus on attracting, growing, and retaining the best people in the industry. And with continuous training and development opportunities, our associates are well-equipped to provide unrivaled service to our customer partners.

Jones Stephens has more than 500,000 sq. ft. in distribution centers strategically located in Central Alabama and Southern California. The abundance of distribution space allows us to inventory over 20,000 SKUs to provide the right, high-quality products our customers need when they need them.

With our exceptional associates and distinct competencies in service, sourcing and product development, and a distribution network that spans the United States, we're adequately equipped to fulfill our mission.

Jones Stephens' competencies, along with our extensive product offering, allow us to say with confidence, "We Got It".



Table of Contents

PEX-A Piping	8
Oxygen Barrier Pipe - Natural Coil.....	8
Oxygen Barrier Pipe - Natural Straight.....	9
Potable Water- Natural Coil.....	9
Potable Water - Natural Straight	10
Potable Water - Red Coil.....	10
Potable Water - Red Straight	10
Potable Water - Blue Coil	11
Potable Water - Blue Straight	11
F1960 Brass Cold Expansion Fittings	12
Elbows	12
Couplings	13
Adapters	14
Tees.....	15
Plugs.....	16
F1960 Poly Cold Expansion Fittings.....	17
Elbows	17
Couplings	18
Tees.....	18
Adapters	20
Manifolds.....	20
Plugs.....	20
Rings with Stop	21
F1807 Brass Crimp Fittings	22
Elbows	22
Couplings	23
Adapters	23
PEX Tees	24
Plugs.....	25
Ball Valves.....	25
Rings	25
Oetiker Clamps.....	26
F2159 Polymer Crimp Fittings	27
Elbows	27
Couplings	27
Adapters	27
PEX Tees	28
PEX Plugs.....	28
Tools.....	29
Crimping Tools	29
Clamp Tools	29
Oetiker Crimp Tool	29
Pipe Cutting Tools	29

Jones Stephens PEX-A Piping System



Our comprehensive offering includes PEX-A pipe for potable water and oxygen barrier applications, as well as cold expansion and crimp-style fittings. Jones Stephens PEX-A Piping System solutions are certified and approved to meet industry standards and are manufactured with the highest-quality materials.

PEX-A Pipe for Potable Water and Oxygen Barrier Pipe:

- NSF certified to ASTM F876/877 and CSA B137.5- 2017/2011a per NSF/ANSI 14, 61 and 372
- ANSI/NSF14 and ANSI/NSF 61 approved
- ASTM E84, ASTM F876, ASTM F877, ASTM F1960, ASTM F2023, ASTM E814, and ASTM E119/UL 263 approved
- CAN/ULC S101 and ULC S102.2 approved
- CSA B214 approved
- AWWA C904 approved
- Certified by ICC-ES to meet PMG-1559 standard

F1960 Brass Cold Expansion Fittings:

- Tested and certified to ASTM F1960
- Certified to CSA B137.5-2020
- Certified to NSF/ANSI/CAN 61- 2019, NSF/ANSI 372-2016, and NSF/ANSI 14-2015
- cUPC Listed

F1960 Poly Cold Expansion Fittings:

- Tested and certified to ASTM F1960 and ASTM F877-2020
- Certified to CSA B137.5-2020 and CSA B137.5-2017
- Certified to NSF/ANSI/CAN 61-2018, NSF/ANSI 14-2016, and NSF/ANSI 372-2011
- cUPC Listed

F1807 Brass Crimp Fittings:

- Certified to NSF/ANSI 372-2016, NSF/ANSI 61-2017, and NSF/ANSI 14-2016a
- Certified to ASTM F1807-2019b and CSA B137.5-2017
- NSF/ANSI/CAN 61-2019
- cUPC Listed

F2159 Polymer Crimp Fittings:

- Certified to ASTM F2159-2014 and CSA B137.5-2013
- Certified to ASTM F877-2020 and CSA B137.5-2017
- Certified to NSF/ANSI 14-2015, NSF/ANSI 14-2016a, and NSF/ANSI 372-2011
- Certified to NSF/ANSI/CAN 61-2019
- cUPC listed

Jones Stephens backs our PEX-A plumbing system with a **25-year limited warranty**.

Jones Stephens' **PEX-A pipe** is manufactured of crosslinked polyethylene (PEX 5106) and is available for potable water or oxygen barrier applications. Red, Natural and Blue colored coils and sticks are available to meet your specific installation needs.



While copper can corrode with mineral build up, PEX-A pipe is **corrosion resistant** – increasing the durability of the system.



With its superior, durable crosslinking pattern, PEX-A pipe is **highly flexible**.



Copper and CPVC systems can burst in freezing temperatures, costing the installer thousands. PEX-A pipe **expands when freezing** to resist damage.



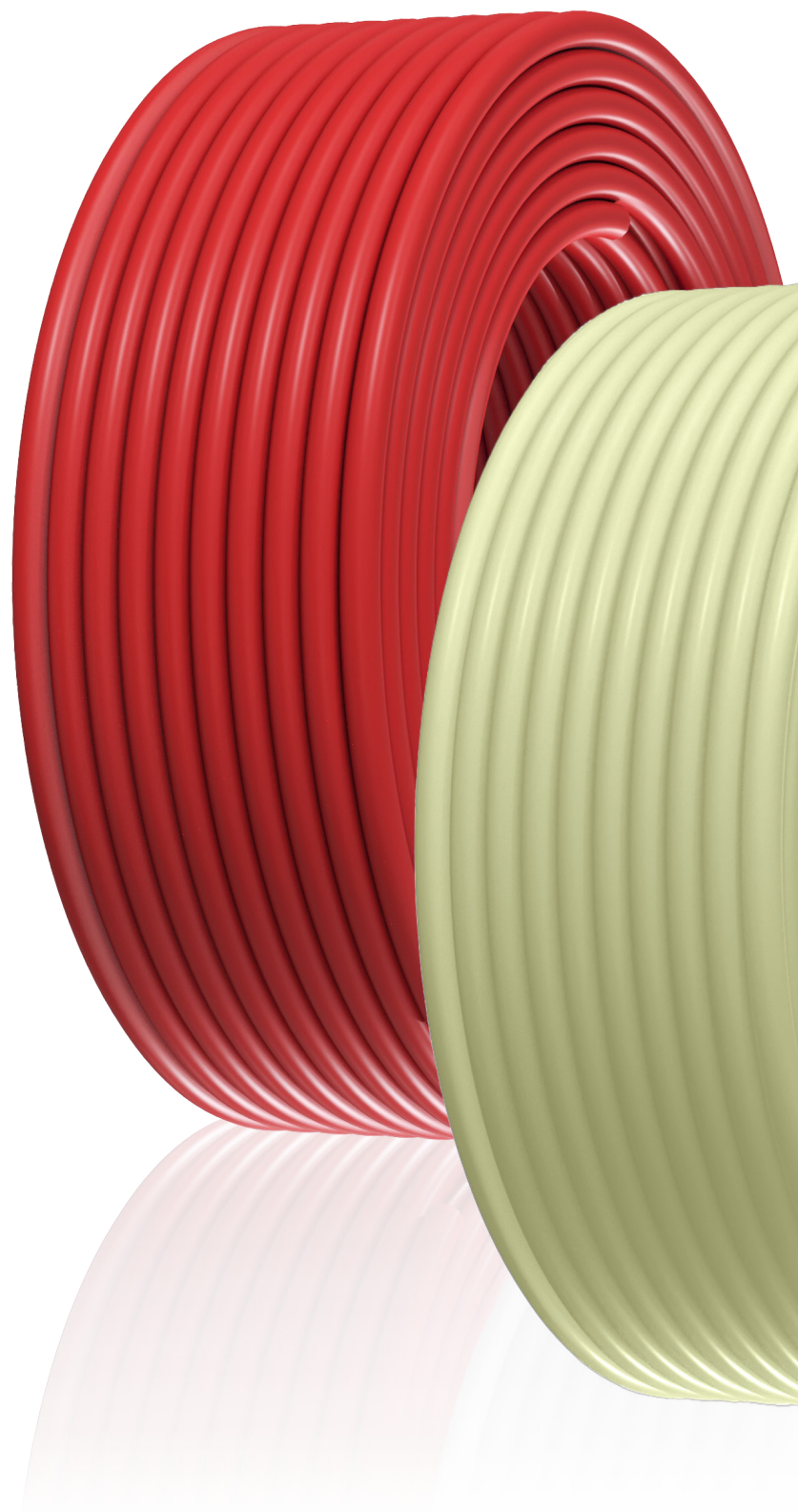
PEX-A pipe creates less kinking and requires less fittings compared to alternate piping methods, making installation **simple and saving the installer time and energy**.



PEX-A pipe expands to absorb sound from water hammer – providing **quiet operation**.

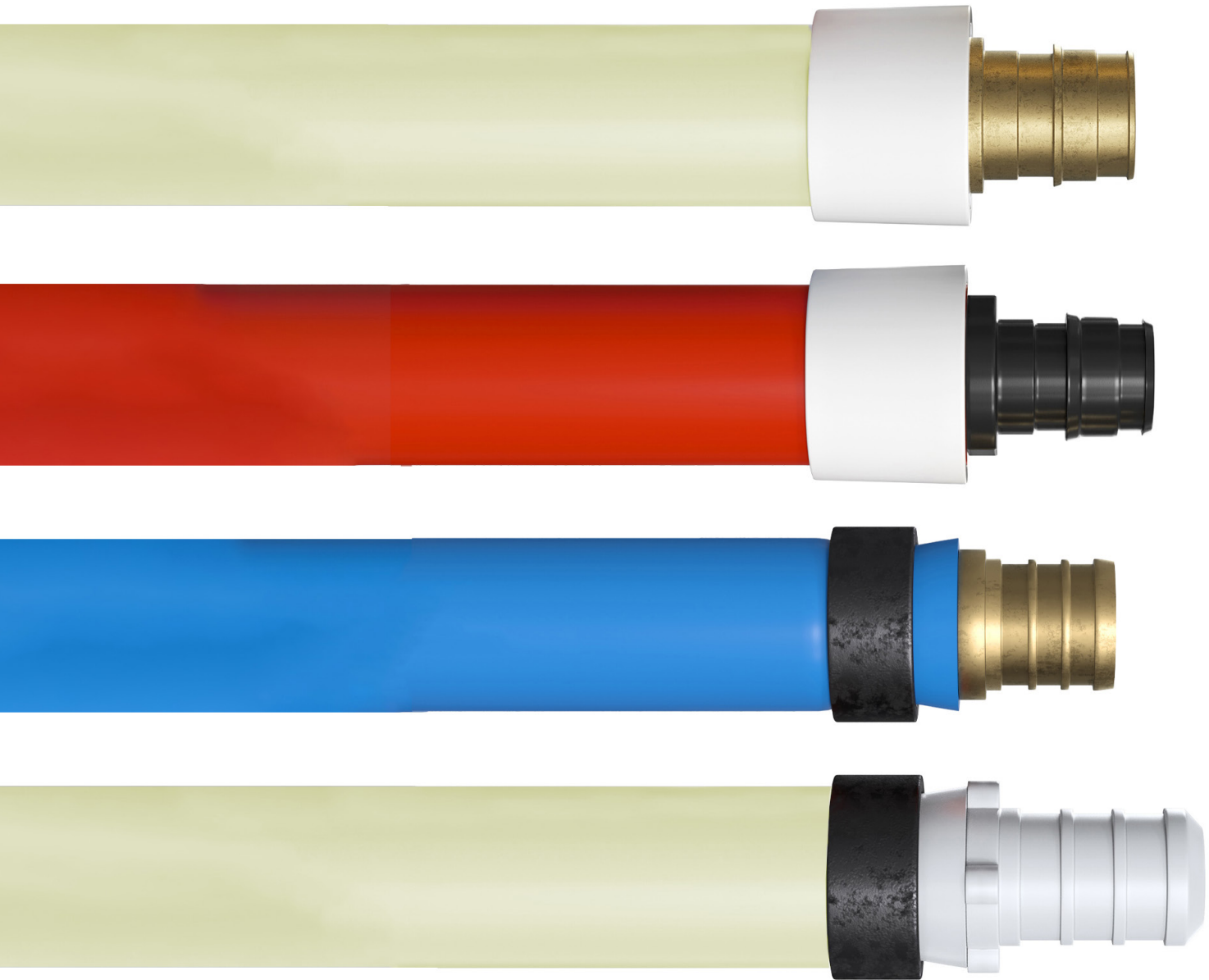


PEX-A pipe's high thermal resistance allows hot water lines to stay hot longer than copper or CPVC pipe – **saving valuable energy**.



Jones Stephens backs our PEX-A plumbing system with a **25-year limited warranty**.

Jones Stephens' **PEX fittings** are manufactured of high-quality brass and plastic and are available in expansion and crimp connection styles.



Made with **strong polymer or brass material**, F1960 cold expansion fittings, F1807 brass crimp fittings, and F2159 plastic crimp fittings provide a **dependable plumbing connection**.



F1960 cold expansion fittings, F1807 brass crimp fittings, and F2159 plastic crimp fittings provide a **secure, leak-free connection**.

Jones Stephens backs our PEX-A plumbing system with a **25-year limited warranty**.



PEX-A Piping

With its superior, durable crosslinking pattern, Jones Stephens' Oxygen Barrier and Potable Water PEX-A pipe is highly flexible. It creates less kinking and requires less fittings compared to alternate piping methods, making installation simple and saving the installer time and energy. PEX-A pipe expands to absorb the sound of water hammer – providing quiet operation. Its additional layer of polyethylene creates a moisture barrier, making it safe for radiant/hydronic applications and safe for burying in concrete. Manufactured to the highest industry standards, PEX-A pipe is freeze resistant, corrosion resistant, and energy efficient. Approved for use with F1960 cold expansion fittings and F1807 or F2159 crimp fittings.

- Crosslinked polyethylene; PEX 5106
- Approved for use with F1960, F1807, and F2159 fittings
- Easy installation
- Corrosion resistant
- Freeze resistant
- Quiet operation
- Approved for use in radiant/hydronic applications
- NSF certified to ASTM F876/877 and CSA B137.5 per NSF/ANSI 14, 61 and 372
- ANSI/NSF14 and ANSI/NSF 61 approved
- ASTM E84, ASTM F876, ASTM F877, ASTM F1960, and ASTM F2023 approved
- CAN/ULC S101 and ULC S102.2 approved
- AWWA C904 approved
- Certified by ICC-ES to meet PMG-1559 standard

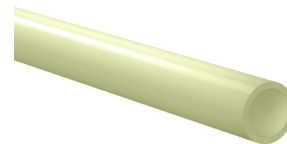
PEX-A Oxygen Barrier Pipe - Natural Coil



Part Code	Description	OD	Tolerance	Wall Thickness	Tolerance	Pallet Qty
F76818	1/2" x 100' Natural Pipe, Coil	0.625"	±0.004"	0.070"	+0.010"	32
F76819	1/2" x 300' Natural Pipe, Coil	0.625"	±0.004"	0.070"	+0.010"	24
F76820	1/2" x 500' Natural Pipe, Coil	0.625"	±0.004"	0.070"	+0.010"	15
F76821	1/2" x 1000' Natural Pipe, Coil	0.625"	±0.004"	0.070"	+0.010"	8
F76823	5/8" x 100' Natural Pipe, Coil	0.750"	±0.004"	0.083"	+0.010"	29
F76824	5/8" x 300' Natural Pipe, Coil	0.750"	±0.004"	0.083"	+0.010"	17
F76825	5/8" x 400' Natural Pipe, Coil	0.750"	±0.004"	0.083"	+0.010"	16
F76826	5/8" x 1000' Natural Pipe, Coil	0.750"	±0.004"	0.083"	+0.010"	6
F76827	3/4" x 100' Natural Pipe, Coil	0.875"	±0.004"	0.097"	+0.010"	24
F76828	3/4" x 300' Natural Pipe, Coil	0.875"	±0.004"	0.097"	+0.010"	14
F76829	3/4" x 500' Natural Pipe, Coil	0.875"	±0.004"	0.097"	+0.010"	9
F76830	3/4" x 1000' Natural Pipe, Coil	0.875"	±0.004"	0.097"	+0.010"	4
F76016	1-1/4" x 100' Natural Pipe, Coil	1.375"	±0.005"	0.161"	+0.015"	13
F76019	1-1/4" x 300' Natural Pipe, Coil	1.375"	±0.005"	0.161"	+0.015"	5
F76017	1-1/2" x 100' Natural Pipe, Coil	1.625"	±0.006"	0.191"	+0.019"	9
F76020	1-1/2" x 300' Natural Pipe, Coil	1.625"	±0.006"	0.191"	+0.019"	8
F76018	2" x 100' Natural Pipe, Coil	2.125"	±0.006"	0.248"	+0.024"	5

Product color may vary by batch

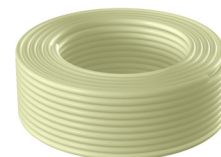
PEX-A Oxygen Barrier Pipe - Natural Straight



Part Code	Description	OD	Tolerance	Wall Thickness	Tolerance	Pallet Qty
F76817	1/2" x 20' Natural Pipe, Pack of 25 Straight Lengths	0.625"	±0.004"	0.070"	+0.010"	16
F76083	3/4" x 20' Natural Pipe, Pack of 15 Straight Lengths	0.875"	±0.004"	0.097"	+0.010"	16
F76822	5/8" x 20' Natural Pipe, Pack of 15 Straight Lengths	0.750"	±0.004"	0.083"	+0.010"	22
F76013	1-1/4" x 20' Natural Pipe, Pack of 5 Straight Lengths	1.375"	±0.005"	0.161"	+0.015"	10
F76014	1-1/2" x 20' Natural Pipe, Pack of 5 Straight Lengths	1.625"	±0.006"	0.191"	+0.019"	10
F76015	2" x 20' Natural Pipe, Pack of 5 Straight Lengths	2.125"	±0.006"	0.248"	+0.024"	10

Product color may vary by batch

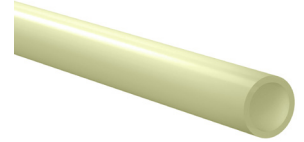
PEX-A Pipe for Potable Water- Natural Coil



Part Code	Description	OD	Tolerance	Wall Thickness	Tolerance	Pallet Qty
F76782	1/2" x 100' Natural Pipe, Coil	0.625"	±0.004"	0.070"	+0.010"	32
F76783	1/2" x 300' Natural Pipe, Coil	0.625"	±0.004"	0.070"	+0.010"	24
F76784	1/2" x 500' Natural Pipe, Coil	0.625"	±0.004"	0.070"	+0.010"	15
F76785	1/2" x 1000' Natural Pipe, Coil	0.625"	±0.004"	0.070"	+0.010"	8
F76787	3/4" x 100' Natural Pipe, Coil	0.875"	±0.004"	0.097"	+0.010"	24
F76788	3/4" x 300' Natural Pipe, Coil	0.875"	±0.004"	0.097"	+0.010"	14
F76789	3/4" x 500' Natural Pipe, Coil	0.875"	±0.004"	0.097"	+0.010"	9
F76791	1" x 100' Natural Pipe, Coil	1.125"	±0.005"	0.125"	+0.013"	24
F76792	1" x 300' Natural Pipe, Coil	1.125"	±0.005"	0.125"	+0.013"	8
F76793	1" x 500' Natural Pipe, Coil	1.125"	±0.005"	0.125"	+0.013"	6
F76077	1-1/4" x 100' Natural Pipe, Coil	1.375"	±0.005"	0.153"	+0.015"	13
F76080	1-1/4" x 300' Natural Pipe, Coil	1.375"	±0.005"	0.153"	+0.015"	5
F76078	1-1/2" x 100' Natural Pipe, Coil	1.625"	±0.006"	0.181"	+0.019"	9
F76081	1-1/2" x 300' Natural Pipe, Coil	1.625"	±0.006"	0.181"	+0.019"	8
F76079	2" x 100' Natural Pipe, Coil	2.125"	±0.006"	0.236"	+0.024"	5
F76082	2" x 300' Natural Pipe, Coil	2.125"	±0.006"	0.236"	+0.024"	6

Product color may vary by batch

PEX-A Pipe for Potable Water - Natural Straight



Part Code	Description	OD	Tolerance	Wall Thickness	Tolerance	Pallet Qty
F76781	1/2" x 20' Natural Pipe, Pack of 25 Straight Lengths	0.625"	±0.004"	0.070"	+0.010"	16
F76786	3/4" x 20' Natural Pipe, Pack of 15 Straight Lengths	0.875"	±0.004"	0.097"	+0.010"	16
F76790	1" x 20' Natural Pipe, Pack of 10 Straight Lengths	1.125"	±0.005"	0.125"	+0.013"	10
F76074	1-1/4" x 20' Natural Pipe, Pack of 5 Straight Lengths	1.375"	±0.005"	0.153"	+0.015"	10
F76075	1-1/2" x 20' Natural Pipe, Pack of 5 Straight Lengths	1.625"	±0.006"	0.181"	+0.019"	10
F76076	2" x 20' Natural Pipe, Pack of 5 Straight Lengths	2.125"	±0.006"	0.236"	+0.024"	10

Product color may vary by batch

PEX-A Pipe for Potable Water - Red Coil



Part Code	Description	OD	Tolerance	Wall Thickness	Tolerance	Pallet Qty
F76795	1/2" x 100' Red Pipe, Coil	0.625"	±0.004"	0.070"	+0.010"	32
F76796	1/2" x 300' Red Pipe, Coil	0.625"	±0.004"	0.070"	+0.010"	24
F76797	1/2" x 1000' Red Pipe, Coil	0.625"	±0.004"	0.070"	+0.010"	8
F76799	3/4" x 100' Red Pipe, Coil	0.875"	±0.004"	0.097"	+0.010"	24
F76800	3/4" x 300' Red Pipe, Coil	0.875"	±0.004"	0.097"	+0.010"	14
F76801	3/4" x 500' Red Pipe, Coil	0.875"	±0.004"	0.097"	+0.010"	9
F76803	1" x 100' Red Pipe, Coil	1.125"	±0.005"	0.125"	+0.013"	24
F76804	1" x 300' Red Pipe, Coil	1.125"	±0.005"	0.125"	+0.013"	8

PEX-A Pipe for Potable Water - Red Straight



Part Code	Description	OD	Tolerance	Wall Thickness	Tolerance	Pallet Qty
F76794	1/2" x 20' Red Pipe, Pack of 25 Straight Lengths	0.625"	±0.004"	0.070"	+0.010"	16
F76798	3/4" x 20' Red Pipe, Pack of 15 Straight Lengths	0.875"	±0.004"	0.097"	+0.010"	16
F76802	1" x 20' Red Pipe, Pack of 10 Straight Lengths	1.125"	±0.005"	0.125"	+0.013"	10

PEX-A Pipe for Potable Water - Blue Coil



Part Code	Description	OD	Tolerance	Wall Thickness	Tolerance	Pallet Qty
F76806	1/2" x 100' Blue Pipe, Coil	0.625"	±0.004"	0.070"	+0.010"	32
F76807	1/2" x 300' Blue Pipe, Coil	0.625"	±0.004"	0.070"	+0.010"	24
F76808	1/2" x 1000' Blue Pipe, Coil	0.625"	±0.004"	0.070"	+0.010"	8
F76810	3/4" x 100' Blue Pipe, Coil	0.875"	±0.004"	0.097"	+0.010"	24
F76811	3/4" x 300' Blue Pipe, Coil	0.875"	±0.004"	0.097"	+0.010"	14
F76812	3/4" x 500' Blue Pipe, Coil	0.875"	±0.004"	0.097"	+0.010"	9
F76814	1" x 100' Blue Pipe, Coil	1.125"	±0.005"	0.125"	+0.013"	24
F76815	1" x 300' Blue Pipe, Coil	1.125"	±0.005"	0.125"	+0.013"	8
F76816	1" x 500' Blue Pipe, Coil	1.125"	±0.005"	0.125"	+0.013"	6

PEX-A Pipe for Potable Water - Blue Straight



Part Code	Description	OD	Tolerance	Wall Thickness	Tolerance	Pallet Qty
F76805	1/2" x 20' Blue Pipe, Pack of 25 Straight Lengths	0.625"	±0.004"	0.070"	+0.010"	16
F76809	3/4" x 20' Blue Pipe, Pack of 15 Straight Lengths	0.875"	±0.004"	0.097"	+0.010"	16
F76813	1" x 20' Blue Pipe, Pack of 10 Straight Lengths	1.125"	±0.005"	0.125"	+0.013"	10



F1960 Brass Cold Expansion Fittings

Manufactured to the highest industry standards, Jones Stephens' F1960 lead-free brass cold expansion fittings provide precise, secure, and leak-free connections. Made with DZR brass, F1960 cold expansion fittings are corrosion and chlorine/chemical resistant – making them a great fit for aggressive water environments. Approved for use with PEX-A piping.

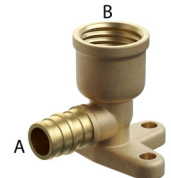
- Simple and dependable plumbing connection
- Easy installation
- Leak-proof connections
- Lead-free DZR brass
- Can be used with F1960 PEX rings
- Sold in carton quantities only
- Tested and certified to ASTM F1960-2021
- Certified to NSF/ANSI/CAN 61-2021, NSF/ANSI/CAN 372-2022, and NSF/ANSI 14-2015
- Certified to CSA B137.5-2020
- cUPC listed
- Lead law compliant

F1960 Brass PEX 90° Elbow



Part Code	Description	A	B	CTN/MSTR
F76870	1/2" F1960 Brass PEX 90° Elbow	0.50"	0.50"	25/100
F76871	3/4" F1960 Brass PEX 90° Elbow	0.75"	0.75"	25/100
F76872	1" F1960 Brass PEX 90° Elbow	1.00"	1.00"	10/100

F1960 x FIP Brass PEX 90° Drop Ear Elbow



Part Code	Description	A	B	CTN/MSTR
F76833	1/2" F1960 x FIP Brass PEX 90° Drop Ear Elbow	0.50"	0.50"	25/100
F76834	3/4" F1960 x FIP Brass PEX 90° Drop Ear Elbow	0.75"	0.75"	4/100

F1960 x MIP Brass PEX 90° Elbow



Part Code	Description	A	B	CTN/MSTR
F76831	1/2" F1960 x MIP Brass PEX 90° Elbow	0.50"	0.50"	25/100

F1960 Brass PEX Coupling



Part Code	Description	A	B	CTN/MSTR
F76854	1/2" F1960 Brass PEX Coupling	0.50"	0.50"	25/50
F76855	1/2" x 3/4" F1960 Brass PEX Coupling	0.50"	0.75"	25/50
F76891	5/8" F1960 PEX Brass Coupling	0.62"	0.62"	30/120
F76857	3/4" F1960 Brass PEX Coupling	0.75"	0.75"	25/50
F76856	3/4" x 1" F1960 Brass PEX Coupling	0.75"	1.00"	10/50
F76853	1" F1960 Brass PEX Coupling	1.00"	1.00"	10/100

F1960 PEX to Poly Brass Coupling



Part Code	Description	A	B	CTN/MSTR
F76863	1/2" F1960 PEX to Poly Brass Coupling	0.50"	0.50"	25/100
F76864	3/4" F1960 PEX to Poly Brass Coupling	0.75"	0.75"	4/20
F76865	1" F1960 PEX to Poly Brass Coupling	1.00"	1.00"	10/100

F1960 Brass PEX Male Sweat Adapter



Part Code	Description	A	B	CTN/MSTR
F76836	1/2" F1960 Brass PEX Male Sweat Adapter	0.50"	0.50"	25/100
F76837	1/2" F1960 x 3/4" Male Brass PEX Sweat Adapter	0.50"	0.75"	25/100
F76840	3/4" F1960 Brass PEX Male Sweat Adapter	0.75"	0.75"	25/100
F76839	3/4" F1960 x 1/2" Male Brass PEX Sweat Adapter	0.75"	0.50"	25/100
F76838	3/4" F1960 x 1" Male Brass PEX Sweat Adapter	0.75"	1.00"	10/100
F76835	1" F1960 Brass PEX Male Sweat Adapter	1.00"	1.00"	10/100
F76089	1-1/4" F1960 Brass PEX Male Sweat Adapter	1.25"	1.25"	8/96

F1960 Brass PEX Female Sweat Adapter



Part Code	Description	A	B	CTN/MSTR
F76842	1/2" F1960 Brass PEX Female Sweat Adapter	0.50"	0.50"	25/100
F76843	1/2" F1960 x 3/4" Female Brass PEX Sweat Adapter	0.50"	0.75"	25/100
F76846	3/4" F1960 Brass PEX Female Sweat Adapter	0.75"	0.75"	25/100
F76845	3/4" F1960 x 1/2" Female Brass PEX Sweat Adapter	0.75"	0.50"	25/50
F76844	3/4" F1960 x 1" Female Brass PEX Sweat Adapter	0.75"	1.00"	10/100
F76841	1" F1960 Brass PEX Female Sweat Adapter	1.00"	1.00"	10/100
F76168	1-1/4" F1960 Brass PEX Female Sweat Adapter	1.25"	1.25"	8/96
F76169	1-1/2" F1960 Brass PEX Female Sweat Adapter	1.50"	1.50"	12/48
F76170	2" F1960 Brass PEX Female Sweat Adapter	2.00"	2.00"	6/24

F1960 x MIP Brass PEX Adapter



Part Code	Description	A	B	CTN/MSTR
F76849	1/2" F1960 x MIP Brass PEX Adapter	0.50"	0.50"	25/100
F76850	1/2" F1960 x 3/4" MIP Brass PEX Adapter	0.50"	0.75"	25/100
F76852	3/4" F1960 x MIP Brass PEX Adapter	0.75"	0.75"	25/100
F76851	3/4" F1960 x 1" MIP Brass PEX Adapter	0.75"	1.00"	10/100
F76847	1" F1960 x MIP Brass PEX Adapter	1.00"	1.00"	10/100
F76848	1" F1960 x 3/4" MIP Brass PEX Adapter	1.00"	0.75"	10/100
F76165	1-1/4" F1960 x MIP Brass PEX Adapter	1.25"	1.25"	6/72
F76166	1-1/2" F1960 x MIP Brass PEX Adapter	1.50"	1.50"	6/48
F76167	2" F1960 x MIP Brass PEX Adapter	2.00"	2.00"	6/24

F1960 x FIP Brass PEX Adapter



Part Code	Description	A	B	CTN/MSTR
F76859	1/2" F1960 x FIP Brass PEX Adapter	0.50"	0.50"	25/100
F76860	1/2" F1960 x 3/4" FIP Brass PEX Adapter	0.50"	0.75"	25/100
F76862	3/4" F1960 x FIP Brass PEX Adapter	0.75"	0.75"	25/100
F76861	3/4" F1960 x 1" FIP Brass PEX Adapter	0.75"	1.00"	10/100
F76858	1" F1960 x FIP Brass PEX Adapter	1.00"	1.00"	10/50
F76171	1-1/4" F1960 x FIP Brass PEX Adapter	1.25"	1.25"	6/72
F76172	1-1/2" F1960 x FIP Brass PEX Adapter	1.50"	1.50"	6/48
F76173	2" F1960 x FIP Brass PEX Adapter	2.00"	2.00"	6/36

F1960 Brass PEX Tee



Part Code	Description	A	B	C	CTN/MSTR
F76866	1/2" F1960 Brass PEX Tee	0.50"	0.50"	0.50"	25/100
F76868	3/4" F1960 Brass PEX Tee	0.75"	0.75"	0.75"	25/100
F76904	1" F1960 Brass PEX Tee	1.00"	1.00"	1.00"	10/60

F1960 Brass PEX Reducing Tee



Part Code	Description	A	B	C	CTN/MSTR
F76905	1/2" x 1/2" x 3/4" F1960 Brass PEX Reducing Tee	0.50"	0.50"	0.75"	25/150
F76906	3/4" x 1/2" x 1/2" F1960 Brass PEX Reducing Tee	0.75"	0.50"	0.50"	25/150
F76913	3/4" x 1/2" x 3/4" F1960 Brass PEX Reducing Tee	0.75"	0.50"	0.75"	25/150
F76867	3/4" x 3/4" x 1/2" F1960 Brass PEX Reducing Tee	0.75"	0.75"	0.50"	25/100
F76869	3/4" x 3/4" x 1" F1960 Brass PEX Reducing Tee	0.75"	0.75"	1.00"	10/100
F76896	1" x 1/2" x 1" F1960 Brass PEX Reducing Tee	1.00"	0.50"	1.00"	10/80
F76903	1" x 3/4" x 1/2" F1960 Brass PEX Reducing Tee	1.00"	0.75"	0.50"	10/100
F76898	1" x 3/4" x 3/4" F1960 Brass PEX Reducing Tee	1.00"	0.75"	0.75"	10/100
F76897	1" x 3/4" x 1" F1960 Brass PEX Reducing Tee	1.00"	0.75"	1.00"	10/80
F76894	1" x 1" x 1/2" F1960 Brass PEX Reducing Tee	1.00"	1.00"	0.50"	10/100
F76895	1" x 1" x 3/4" F1960 Brass PEX Reducing Tee	1.00"	1.00"	0.75"	10/80

F1960 Brass PEX Plug



Part Code	Description	CTN/MSTR
F76900	1/2" F1960 Brass PEX Plug	25/600
F76901	3/4" F1960 Brass PEX Plug	25/350
F76902	1" F1960 Brass PEX Plug	10/200



F1960 Poly Cold Expansion Fittings

Manufactured to the highest industry standards, Jones Stephens' F1960 cold expansion fittings provide precise, secure, and leak-free connections. Made with high-performance poly material, F1960 cold expansion fittings are corrosion and chlorine/chemical resistant – making them a great fit for aggressive water environments. Approved for use with PEX-A piping.

- Simple and dependable plumbing connection
- Easy installation
- Leak-proof connections
- Poly construction
- Manufactured of premium grade resin with non-mixed blends
- Can be used with F1960 PEX rings
- Sold in carton quantities only
- Tested and certified to ASTM F1960-2018a and ASTM F877-2020
- Certified to NSF/ANSI/CAN 61-2022, NSF/ANSI 14-2016a, and NSF/ANSI/CAN 372-2022
- Certified to CSA B137.5-2020
- cUPC listed

F1960 Poly PEX 45° Elbow



Part Code	Description	A	B	CTN/MSTR
F76024	1-1/2" F1960 Poly PEX 45° Elbow	1.50"	1.50"	10/40
F76025	2" F1960 Poly PEX 45° Elbow	2.00"	2.00"	5/20

F1960 Poly PEX 90° Elbow



Part Code	Description	A	B	CTN/MSTR
F76751	1/2" F1960 Poly PEX 90° Elbow	0.50"	0.50"	25/600
F76752	3/4" F1960 Poly PEX 90° Elbow	0.75"	0.75"	25/200
F76753	1" F1960 Poly PEX 90° Elbow	1.00"	1.00"	10/100
F76021	1-1/4" F1960 Poly PEX 90° Elbow	1.25"	1.25"	10/70
F76022	1-1/2" F1960 Poly PEX 90° Elbow	1.50"	1.50"	10/40
F76023	2" F1960 Poly PEX 90° Elbow	2.00"	2.00"	10/20

F1960 Poly PEX Coupling



Part Code	Description	A	B	CTN/MSTR
F76754	1/2" F1960 Poly PEX Coupling	0.50"	0.50"	25/1000
F76755	3/4" F1960 Poly PEX Coupling	0.75"	0.75"	25/500
F76756	3/4" x 1/2" F1960 Poly PEX Coupling	0.75"	0.50"	25/400
F76779	1" F1960 Poly PEX Coupling	1.00"	1.00"	10/250
F76758	1" x 3/4" F1960 Poly PEX Coupling	1.00"	0.75"	25/300
F76026	1-1/4" F1960 Poly PEX Coupling	1.25"	1.25"	10/160
F76030	1-1/4" x 3/4" F1960 Poly PEX Coupling	1.25"	0.75"	10/190
F76029	1-1/4" x 1" F1960 Poly PEX Coupling	1.25"	1.00"	10/170
F76027	1-1/2" F1960 Poly PEX Coupling	1.50"	1.50"	10/100
F76033	1-1/2" x 3/4" F1960 Poly PEX Coupling	1.50"	0.75"	10/140
F76031	1-1/2" x 1-1/4" F1960 Poly PEX Coupling	1.50"	1.25"	10/110
F76032	1-1/2" x 1" F1960 Poly PEX Coupling	1.50"	1.00"	10/120
F76028	2" F1960 Poly PEX Coupling	2.00"	2.00"	10/40
F76034	2" x 1-1/2" F1960 Poly PEX Coupling	2.00"	1.50"	10/40

F1960 Poly PEX Tee



Part Code	Description	A	B	C	CTN/MSTR
F76762	1/2" F1960 Poly PEX Tee	0.50"	0.50"	0.50"	25/400
F76763	3/4" F1960 Poly PEX Tee	0.75"	0.75"	0.75"	25/200
F76773	1" F1960 Poly PEX Tee	1.00"	1.00"	1.00"	10/100
F76035	1-1/4" F1960 Poly PEX Tee	1.25"	1.25"	1.25"	10/40
F76036	1-1/2" F1960 Poly PEX Tee	1.50"	1.50"	1.50"	10/20
F76037	2" F1960 Poly PEX Tee	2.00"	2.00"	2.00"	5/10

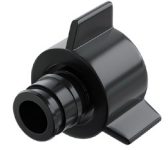
F1960 Poly PEX Reducing Tee



Part Code	Description	A	B	C	CTN/MSTR
F76764	1/2" x 1/2" x 3/4" F1960 Poly PEX Reducing Tee	0.50"	0.50"	0.75"	25/250
F76765	3/4" x 1/2" x 1/2" F1960 Poly PEX Reducing Tee	0.75"	0.50"	0.50"	25/300
F76766	3/4" x 1/2" x 3/4" F1960 Poly PEX Reducing Tee	0.75"	0.50"	0.75"	25/250

Part Code	Description	A	B	C	CTN/MSTR
F76767	3/4" x 3/4" x 1/2" F1960 Poly PEX Reducing Tee	0.75"	0.75"	0.50"	25/100
F76774	3/4" x 3/4" x 1" F1960 Poly PEX Reducing Tee	0.75"	0.75"	1.00"	10/100
F76770	1" x 1" x 1/2" F1960 Poly PEX Reducing Tee	1.00"	1.00"	0.50"	10/100
F76772	1" x 3/4" x 3/4" F1960 Poly PEX Reducing Tee	1.00"	0.75"	0.75"	10/100
F76775	1" x 1" x 3/4" F1960 Poly PEX Reducing Tee	1.00"	1.00"	0.75"	10/100
F76776	1" x 3/4" x 1" F1960 Poly PEX Reducing Tee	1.00"	0.75"	1.00"	10/100
F76054	1-1/2" x 1" x 1" F1960 Poly PEX Reducing Tee	1.50"	1.00"	1.00"	10/40
F76053	1-1/2" x 1" x 1-1/2" F1960 Poly PEX Reducing Tee	1.50"	1.00"	1.50"	10/30
F76055	1-1/2" x 1" x 3/4" F1960 Poly PEX Reducing Tee	1.50"	1.00"	0.75"	10/50
F76049	1-1/2" x 1-1/2" x 1/2" F1960 Poly PEX Reducing Tee	1.50"	1.50"	0.50"	10/50
F76047	1-1/2" x 1-1/2" x 1" F1960 Poly PEX Reducing Tee	1.50"	1.50"	1.00"	10/30
F76046	1-1/2" x 1-1/2" x 1-1/4" F1960 Poly PEX Reducing Tee	1.50"	1.50"	1.25"	10/30
F76048	1-1/2" x 1-1/2" x 3/4" F1960 Poly PEX Reducing Tee	1.50"	1.50"	0.75"	10/40
F76051	1-1/2" x 1-1/4" x 1" F1960 Poly PEX Reducing Tee	1.50"	1.25"	1.00"	10/40
F76050	1-1/2" x 1-1/4" x 1-1/4" F1960 Poly PEX Reducing Tee	1.50"	1.25"	1.25"	10/30
F76052	1-1/2" x 1-1/4" x 3/4" F1960 Poly PEX Reducing Tee	1.50"	1.25"	0.75"	10/40
F76056	1-1/2" x 3/4" x 1-1/2" F1960 Poly PEX Reducing Tee	1.50"	0.75"	1.50"	10/30
F76043	1-1/4" x 1" x 1" F1960 Poly PEX Reducing Tee	1.25"	1.00"	1.00"	10/50
F76044	1-1/4" x 1" x 3/4" F1960 Poly PEX Reducing Tee	1.25"	1.00"	0.75"	10/60
F76042	1-1/4" x 1-1/4" x 1/2" F1960 Poly PEX Reducing Tee	1.25"	1.25"	0.50"	10/70
F76040	1-1/4" x 1-1/4" x 1" F1960 Poly PEX Reducing Tee	1.25"	1.25"	1.00"	10/50
F76041	1-1/4" x 1-1/4" x 3/4" F1960 Poly PEX Reducing Tee	1.25"	1.25"	0.75"	10/60
F76045	1-1/4" x 3/4" x 1-1/4" F1960 Poly PEX Reducing Tee	1.25"	0.75"	1.25"	10/40
F76067	2" x 1-1/2" x 1/2" F1960 Poly PEX Reducing Tee	2.00"	1.50"	0.50"	5/25
F76065	2" x 1-1/2" x 1" F1960 Poly PEX Reducing Tee	2.00"	1.50"	1.00"	10/20
F76063	2" x 1-1/2" x 1-1/2" F1960 Poly PEX Reducing Tee	2.00"	1.50"	1.50"	5/15
F76064	2" x 1-1/2" x 1-1/4" F1960 Poly PEX Reducing Tee	2.00"	1.50"	1.25"	5/15
F76062	2" x 1-1/2" x 2" F1960 Poly PEX Reducing Tee	2.00"	1.50"	2.00"	10/10
F76066	2" x 1-1/2" x 3/4" F1960 Poly PEX Reducing Tee	2.00"	1.50"	0.75"	10/20
F76061	2" x 2" x 1/2" F1960 Poly PEX Reducing Tee	2.00"	2.00"	0.50"	20/20
F76059	2" x 2" x 1" F1960 Poly PEX Reducing Tee	2.00"	2.00"	1.00"	5/20
F76057	2" x 2" x 1-1/2" F1960 Poly PEX Reducing Tee	2.00"	2.00"	1.50"	5/15
F76058	2" x 2" x 1-1/4" F1960 Poly PEX Reducing Tee	2.00"	2.00"	1.25"	5/15
F76060	2" x 2" x 3/4" F1960 Poly PEX Reducing Tee	2.00"	2.00"	0.75"	10/20

F1960 Poly PEX Swivel Faucet Adapter



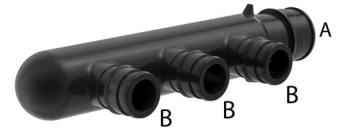
Part Code	Description	CTN/MSTR
F76780	1/2" F1960 Poly PEX Swivel Faucet Adapter	25/400

F1960 Poly PEX Manifold Open End



Part Code	Description	A	B	CTN/MSTR
F76001	3/4" F1960 Poly PEX Manifold, 2-Port	0.75"	0.50"	10/140
F76002	3/4" F1960 Poly PEX Manifold, 3-Port	0.75"	0.50"	10/100
F76006	3/4" F1960 Poly PEX Manifold, 4-Port	0.75"	0.50"	10/100
F76007	3/4" F1960 Poly PEX Manifold, 6-Port	0.75"	0.50"	10/70

F1960 Poly PEX Manifold Closed End



Part Code	Description	A	B	CTN/MSTR
F76005	3/4" F1960 Poly PEX Manifold, 3-Port	0.75"	0.50"	10/140
F76004	3/4" F1960 Poly PEX Manifold, 4-Port	0.75"	0.50"	10/100
F76003	3/4" F1960 Poly PEX Manifold, 6-Port	0.75"	0.50"	10/60
F76009	1" F1960 Poly PEX Manifold, 4-Port	1.00"	0.50"	10/70
F76008	1" F1960 Poly PEX Manifold, 6-Port	1.00"	0.50"	10/60

F1960 Poly PEX Plug

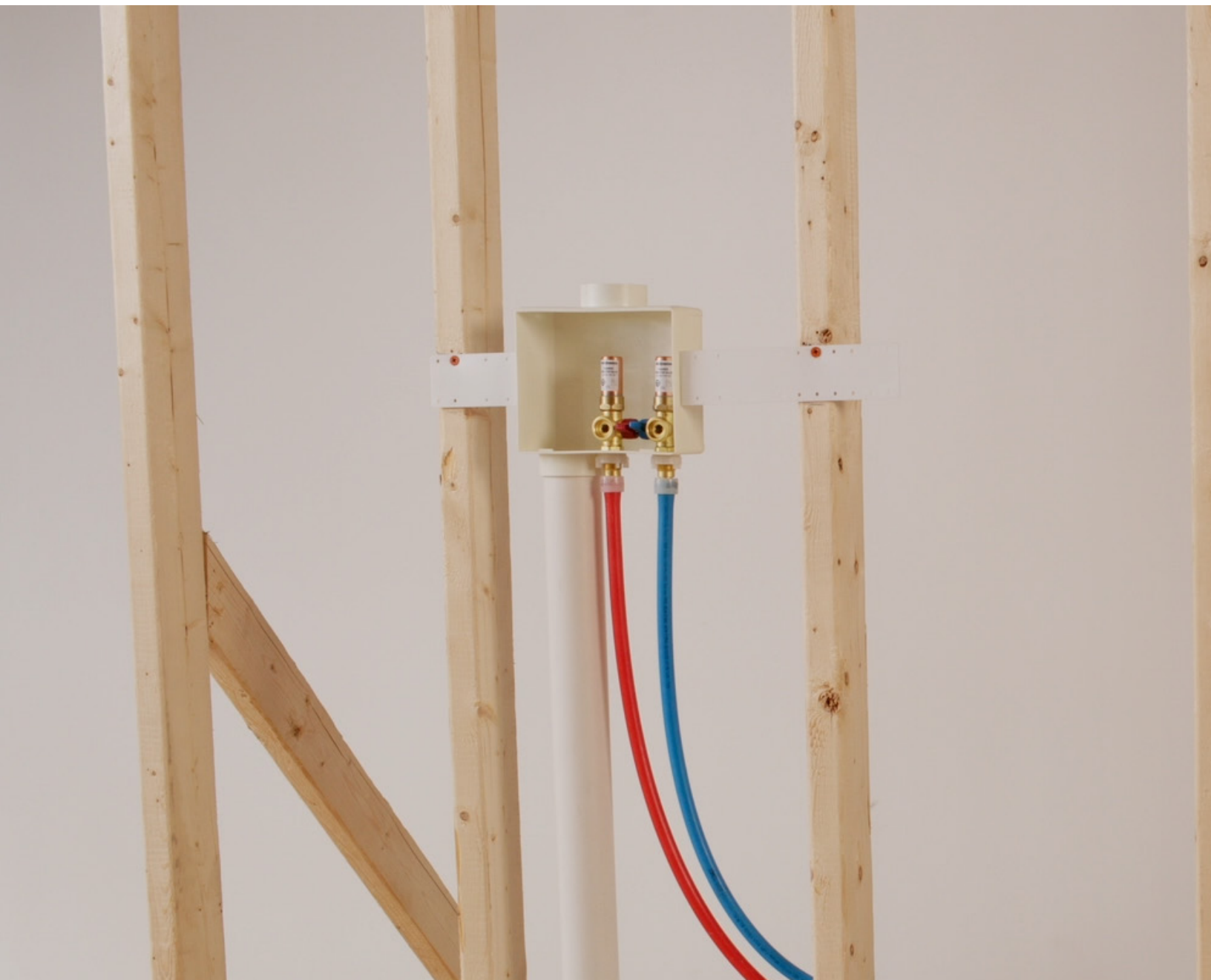


Part Code	Description	CTN/MSTR
F76768	1/2" F1960 Poly PEX Plug	25/1500
F76769	3/4" F1960 Poly PEX Plug	25/1500
F76771	1" F1960 Poly PEX Plug	10/300
F76068	1-1/4" F1960 Poly PEX Plug	10/280
F76069	1-1/2" F1960 Poly PEX Plug	10/180
F76070	2" F1960 Poly PEX Plug	10/80

F1960 PEX Ring with Stop



Part Code	Description	CTN/MSTR
F76909	1/2" F1960 PEX Ring with Stop	50/4000
F76910	5/8" F1960 PEX Ring with Stop	50/3000
F76911	3/4" F1960 PEX Ring with Stop	40/2000
F76912	1" F1960 PEX Ring with Stop	25/1000
F76071	1-1/4" F1960 PEX Ring with Stop	20/500
F76072	1-1/2" F1960 PEX Ring with Stop	8/360
F76073	2" F1960 PEX Ring with Stop	5/150



F1807 Brass Crimp Fittings

Manufactured to the highest industry standards, Jones Stephens' F1807 lead-free brass crimp fittings provide precise, leak-free connections. The secure and reliable crimp fitting method provides full, immediate strength upon installation, with 360-degree uniform pressure. Approved for use with PEX piping.

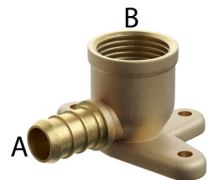
- Simple and dependable plumbing connection
- Easy installation
- Leak-proof connections
- Lead-free brass
- Can be used with copper PEX crimp rings or stainless steel PEX clamps
- Certified to ASTM F1807-2019b
- Certified to NSF/ANSI/ CAN 372-2022, NSF/ANSI/CAN 61-2021, and NSF/ANSI 14-2016a
- Certified to CSA B137.5-2017
- cUPC listed
- Lead law compliant

F1807 Brass PEX 90° Elbow



Part Code	Description	A	B	CTN/MSTR
C76008LF	1/2" F1807 Brass PEX 90° Elbow	0.50	0.50	100/800
C76009LF	3/4" F1807 Brass PEX 90° Elbow	0.75	0.75	50/250
C76010LF	1" F1807 Brass PEX 90° Elbow	1.00	1.00	25/100
C76091LF	3/4" x 1/2" F1807 Brass PEX 90° Elbow	0.75	0.50	50/200

F1807 x FIP Brass PEX 90° Drop Ear Elbow



Part Code	Description	A	B	CTN/MSTR
C76079LF	1/2" F1807 x FIP Brass PEX 90° Drop Ear Elbow	0.50"	0.50"	25/200
C76080LF	1/2" F1807 x FIP Brass PEX 90° Drop Ear Elbow	0.50"	0.50"	25/200
C76090LF	3/4" F1807 x FIP Brass PEX 90° Drop Ear Elbow	0.75"	0.75"	5/50
C76081LF	3/4" F1807 x 1/2" FIP Brass PEX 90° Drop Ear Elbow	0.75"	0.50"	25/200

F1807 x FIP Brass PEX 90° Elbow with Poly Swivel Nut



Part Code	Description	CTN/MSTR
C76060LF	1/2" F1807 x FIP Brass PEX 90° Elbow with Poly Swivel Nut	50/200

F1807 x MIP Brass PEX 90° Elbow



Part Code	Description	A	B	CTN/MSTR
C76013LF	1/2" F1807 x MIP Brass PEX 90° Elbow	0.50"	0.50"	50/400

F1807 Brass PEX Coupling



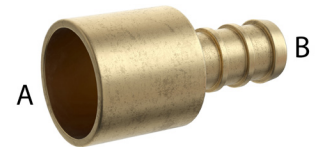
Part Code	Description	A	B	CTN/MSTR
C76001LF	1/2" F1807 Brass PEX Coupling	0.50"	0.50"	100/1000
C76002LF	3/4" F1807 Brass PEX Coupling	0.75"	0.75"	50/500
C76004LF	3/4" x 1/2" F1807 Brass PEX Coupling	0.75"	0.50"	50/500
C76003LF	1" F1807 Brass PEX Coupling	1.00"	1.00"	25/300
C76005LF	1" x 3/4" F1807 Brass PEX Coupling	1.00"	0.75"	50/400

F1807 Brass PEX Male Sweat Adapter



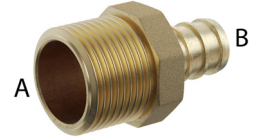
Part Code	Description	A	B	CTN/MSTR
C76047LF	3/8" F1807 x 1/2" Male Brass PEX Sweat Adapter	0.37"	0.50"	50/500
C76048LF	1/2" F1807 Brass PEX Male Sweat Adapter	0.50"	0.50"	100/1000
C76049LF	1/2" F1807 x 3/4" Male Brass PEX Sweat Adapter	0.50"	0.75"	25/100
C76050LF	3/4" F1807 Brass PEX Male Sweat Adapter	0.75"	0.75"	50/400
C76051LF	1" F1807 Brass PEX Male Sweat Adapter	1.00"	1.00"	25/100

F1807 Brass PEX Female Sweat Adapter



Part Code	Description	A	B	CTN/MSTR
C76027LF	1/2" F1807 Brass PEX Female Sweat Adapter	0.50"	0.50"	50/1000
C76029LF	1/2" F1807 x 3/4" Female Brass PEX Sweat Adapter	0.50"	0.75"	50/250
C76028LF	3/4" F1807 Brass PEX Female Sweat Adapter	0.75"	0.75"	25/400
C76030LF	1" F1807 Brass PEX Female Sweat Adapter	1.00"	1.00"	25/200

F1807 x MIP Brass PEX Adapter



Part Code	Description	A	B	CTN/MSTR
C76034LF	1/2" F1807 x MIP Brass PEX Adapter	0.50"	0.50"	25/400
C76035LF	1/2" F1807 x 3/4" MIP Brass PEX Adapter	0.50"	0.75"	25/200
C76036LF	3/4" F1807 x MIP Brass PEX Adapter	0.75"	0.75"	50/250
C76082LF	3/4" F1807 x 1/2" MIP Brass PEX Adapter	0.75"	0.50"	50/250
C76037LF	1" F1807 x MIP Brass PEX Adapter	1.00"	1.00"	25/150
C76038LF	1" F1807 x 3/4" MIP Brass PEX Adapter	1.00"	0.75"	25/200

F1807 x FIP Brass PEX Adapter



Part Code	Description	A	B	CTN/MSTR
C76041LF	1/2" F1807 x FIP Brass PEX Adapter	0.50"	0.50"	50/250
C76042LF	1/2" F1807 x 3/4" FIP Brass PEX Adapter	0.50"	0.75"	25/250
C76043LF	3/4" F1807 x FIP Brass PEX Adapter	0.75"	0.75"	25/200
C76044LF	1" F1807 x FIP Brass PEX Adapter	1.00"	1.00"	25/250

F1807 Brass PEX to Poly Adapter



Part Code	Description	A	B	C	CTN/MSTR
C76100LF	1/2" F1807 Brass PEX to Poly Adapter	0.50"	0.50"	0.50"	25/500
C76101LF	3/4" F1807 Brass PEX to Poly Adapter	0.75"	0.75"	0.75"	25/300

F1807 Brass PEX Tee



Part Code	Description	A	B	C	CTN/MSTR
C76014LF	1/2" F1807 Brass PEX Tee	0.50"	0.50"	0.50"	50/500
C76015LF	3/4" F1807 Brass PEX Tee	0.75"	0.75"	0.75"	50/300
C76016LF	1" F1807 Brass PEX Tee	1.00"	1.00"	1.00"	25/100

F1807 Brass PEX Reducing Tee



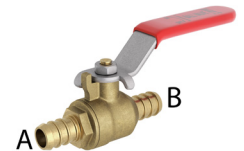
Part Code	Description	A	B	C	CTN/MSTR
C76017LF	1/2" x 1/2" x 3/4" F1807 Brass PEX Reducing Tee	0.50"	0.50"	0.75"	50/300
C76018LF	3/4" x 1/2" x 1/2" F1807 Brass PEX Reducing Tee	0.75"	0.50"	0.50"	25/250
C76019LF	3/4" x 1/2" x 3/4" F1807 Brass PEX Reducing Tee	0.75"	0.50"	0.75"	25/250
C76020LF	3/4" x 3/4" x 1/2" F1807 Brass PEX Reducing Tee	0.75"	0.75"	0.50"	25/250
C76021LF	1" x 3/4" x 3/4" F1807 Brass PEX Reducing Tee	1.00"	0.75"	0.75"	25/200
C76022LF	1" x 1" x 1/2" F1807 Brass PEX Reducing Tee	1.00"	1.00"	0.50"	25/100
C76023LF	1" x 1" x 3/4" F1807 Brass PEX Reducing Tee	1.00"	1.00"	0.75"	25/200

F1807 Brass PEX Plug



Part Code	Description	CTN/MSTR
C76065LF	1/2" F1807 Brass PEX Plug	100/1000
C76066LF	3/4" F1807 Brass PEX Plug	100/800
C76067LF	1" F1807 Brass PEX Plug	50/500

F1807 Brass PEX Ball Valve



Part Code	Description	A	B	CTN/MSTR
B63050LF	1/2" F1807 Brass PEX Ball Valve	0.50"	0.50"	10/120
B63075LF	3/4" F1807 Brass PEX Ball Valve	0.75"	0.75"	10/80
B63100LF	1" F1807 Brass PEX Ball Valve	1.00"	1.00"	6/48

PEX Ring



Part Code	Description	CTN/MSTR
C76070	3/8" PEX Ring	100/2000
C76071	1/2" PEX Ring	100/2000
C76072	3/4" PEX Ring	100/2000
C76073	1" PEX Ring	100/1000

Oetiker Stainless Steel PEX Clamp



Part Code	Description	CTN/MSTR
C76074	3/8" Oetiker Stainless Steel PEX Clamp	100/2000
C76075	1/2" Oetiker Stainless Steel PEX Clamp	100/2000
C76076	3/4" Oetiker Stainless Steel PEX Clamp	50/2000
C76077	1" Oetiker Stainless Steel PEX Clamp	50/1000



F2159 Polymer Crimp Fittings

Manufactured to the highest industry standards, Jones Stephens' F2159 polymer crimp fittings provide precise, leak-free connections. The secure and reliable crimp fitting method provides full, immediate strength upon installation, with 360-degree uniform pressure. Approved for use with PEX piping.

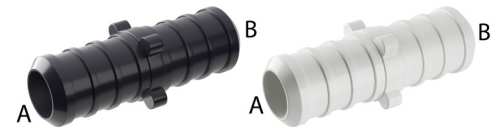
- Simple and dependable plumbing connection
- Easy installation
- Leak-proof connections
- Polymer construction
- Manufactured of premium-grade resin with non-mixed blends
- Can be used with brass PEX crimp rings or stainless steel PEX clamps
- Certified to ASTM F2159-2019 and CSA B137.5-2020
- Certified to ASTM F877-2020 and CSA B137.5-2020
- Certified to NSF/ANSI 14-2016a, and NSF/ANSI/CAN 372-2022
- Certified to NSF/ANSI/CAN 61-2022
- cUPC listed

F2159 Poly PEX 90° Elbow



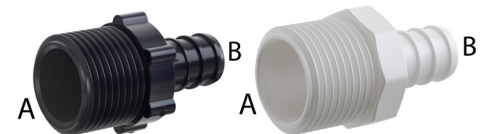
Part Code - Black	Part Code - White	Description	A	B	CTN/MSTR
C76751	C76702	1/2" F2159 Poly PEX 90° Elbow	0.50"	0.50"	50/500
C76752	C76703	3/4" F2159 Poly PEX 90° Elbow	0.75"	0.75"	25/350
C76753	C76720	1" F2159 Poly PEX 90° Elbow	1.00"	1.00"	10/150

F2159 Poly PEX Coupling



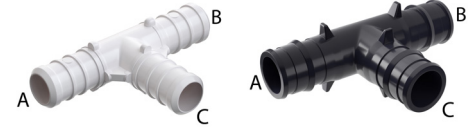
Part Code - Black	Part Code - White	Description	A	B	CTN/MSTR
C76754	C76704	1/2" F2159 Poly PEX Coupling	0.50"	0.50"	50/1000
C76755	C76705	3/4" F2159 Poly PEX Coupling	0.75"	0.75"	50/600
C76756	C76706	3/4" x 1/2" F2159 Poly PEX Coupling	0.75"	0.50"	50/600
C76757	C76722	1" F2159 Poly PEX Coupling	1.00"	1.00"	25/200
C76758	C76723	1" x 3/4" F2159 Poly PEX Coupling	1.00"	0.75"	25/300

F2159 x MIP Poly PEX Adapter



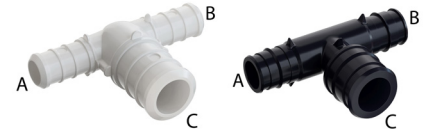
Part Code - Black	Part Code - White	Description	A	B	CTN/MSTR
C76759	C76707	1/2" F2159 x MIP Poly PEX Adapter	0.50"	0.50"	50/500
C76760	C76708	3/4" F2159 x MIP Poly PEX Adapter	0.75"	0.75"	25/300
C76761	C76727	1" F2159 x MIP Poly PEX Adapter	1.00"	1.00"	10/150

F2159 Poly PEX Tee



Part Code - Black	Part Code - White	Description	A	B	C	CTN/MSTR
C76762	C76700	1/2" F2159 Poly PEX Tee	0.50"	0.50"	0.50"	50/400
C76763	C76701	3/4" F2159 Poly PEX Tee	0.75"	0.75"	0.75"	25/200
C76773	-	1" F2159 Poly PEX Tee	1.00"	1.00"	1.00"	50/200

F2159 Poly PEX Reducing Tee



Part Code - Black	Part Code - White	Description	A	B	C	CTN/MSTR
C76764	C76709	1/2" x 1/2" x 3/4" F2159 Poly PEX Reducing Tee	0.50"	0.50"	0.75"	25/300
C76765	C76710	3/4" x 1/2" x 1/2" F2159 Poly PEX Reducing Tee	0.75"	0.75"	0.50"	25/300
C76766	C76711	3/4" x 1/2" x 3/4" F2159 Poly PEX Reducing Tee	0.75"	0.50"	0.75"	25/300
C76767	C76712	3/4" x 3/4" x 1/2" F2159 Poly PEX Reducing Tee	0.75"	0.75"	0.50"	25/300
C76774	-	3/4" x 3/4" x 1" F2159 Poly PEX Reducing Tee	0.75"	0.75"	1.00"	25/100
C76772	-	1" x 3/4" x 3/4" F2159 Poly PEX Reducing Tee	1.00"	0.75"	0.75"	25/300
C76776	-	1" x 3/4" x 1" F2159 Poly PEX Reducing Tee	1.00"	0.75"	1.00"	25/300
C76770	-	1" x 1" x 1/2" F2159 Poly PEX Reducing Tee	1.00"	1.00"	0.50"	25/300
C76775	-	1" x 1" x 3/4" F2159 Poly PEX Reducing Tee	1.00"	1.00"	0.75"	25/300

F2159 Poly PEX Plug



Part Code - Black	Part Code - White	Description	CTN/MSTR
C76768	C76740	1/2" F2159 Poly PEX Plug	100/2000
C76769	C76741	3/4" F2159 Poly PEX Plug	100/1000
C76771	-	1" F2159 Poly PEX Plug	100/1000

Tools

PEX Crimping Tools



Part Code	Description	CTN/MSTR
J40951	3/8" PEX Crimp Tool	1/10
J40952	1/2" PEX Crimp Tool	1/10
J40953	3/4" PEX Crimp Tool	1/10
J40954	1" PEX Crimp Tool	1/10
J40950	PEX Crimp Set with 3/8", 1/2", 3/4" Tools	1/5

PEX Clamp Tools



Part Code	Description	CTN/MSTR
J40965	One Hand PEX Stainless Steel Clamp Tool	1/20
J40966	PEX Stainless Steel Clamp Tool	1/30

Oetiker Crimp Tool



Part Code	Description	CTN/MSTR
J40967	Oetiker® 3-Handle Ratcheting Crimp Tool	1/1

Pipe Cutting Tools



Part Code	Description	CTN/MSTR
P70030	Vinyl Tubing Cutter	12/72
P70031	Replacement Blade for Vinyl Tubing Cutter P70030	50/500

PEX-A PIPING SYSTEM

Ask your local Jones Stephens representative for more information.

Scan the QR code
to learn more
about the PEX-A
piping system on
our website

